

# **A46 Newark Bypass**

**TR010065/APP/6.2**

## **6.2 Environmental Statement**

### **Figure 7.2 Landscape Character Areas**

APFP Regulation 5(2)(a)

Planning Act 2008

Infrastructure Planning (Applications: Prescribed Forms and  
Procedure) Regulations 2009

Volume 6

April 2024

Infrastructure Planning

Planning Act 2008

**The Infrastructure Planning  
(Applications: Prescribed Forms  
and Procedure) Regulations 2009**

**A46 Newark Bypass**

Development Consent Order 202[x]

---

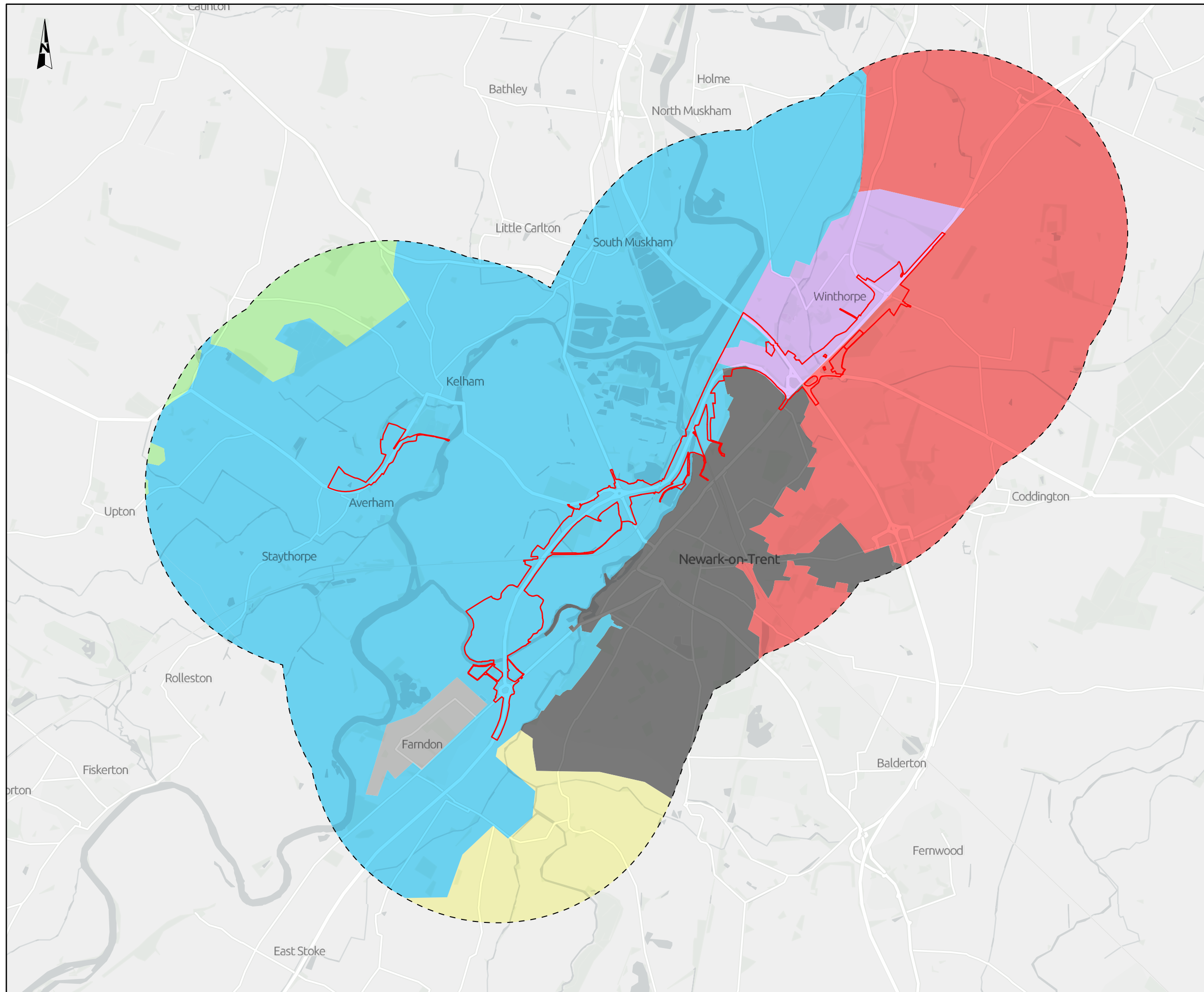
**ENVIRONMENTAL STATEMENT**

**Figure 7.2 Landscape Character Areas**

---

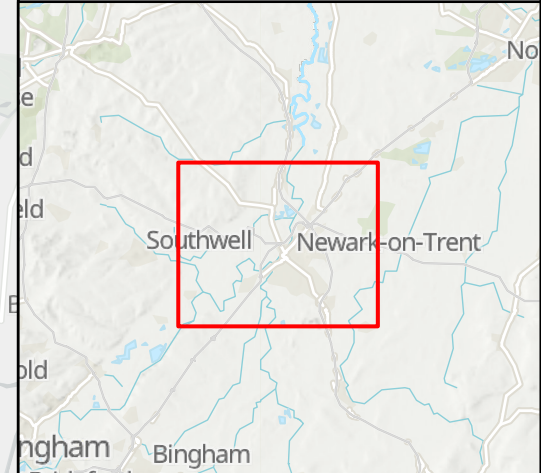
<b>Regulation Number:</b>	Regulation 5(2)(a)
<b>Planning Inspectorate Scheme Reference</b>	TR010065
<b>Application Document Reference</b>	TR010065/APP/6.2
<b>Author:</b>	A46 Newark Bypass Project Team, National Highways

<b>Version</b>	<b>Date</b>	<b>Status of Version</b>
Rev 1	April 2024	DCO Application



**NOTES**  
 Source  
 Character Assessment Supplementary Planning Document.  
 Service Layer Credits  
 Contains OS data © Crown Copyright and database right 2023  
 Contains data from OS Zoomstack

- KEY TO SYMBOLS**
- Order Limits
  - Landscape study area
- Landscape Character Area**
- LCA 1 Trent Washlands
  - LCA 2 Winthorpe Village and Farmlands
  - LCA 3 East Nottinghamshire Sandlands
  - LCA 4 Newark on Trent
  - LCA 5 South Nottinghamshire Farmlands
  - LCA 6 Farndon Village
  - LCA 7 Mid-Nottinghamshire Farmlands



C01	08/12/23	DCO APPLICATION	BH	CU	HF
REV.	DATE	AMENDMENT DETAILS	ORIG	CHK'D	APP'D

CLIENT

PURPOSE OF ISSUE  
 DCO APPLICATION

DEVELOPMENT CONSENT ORDER NUMBER  
 TR010065

PROJECT TITLE  
 A46 NEWARK BYPASS

DRAWING TITLE  
 Figure 7.2  
 Landscape Character Areas

ORIGINAL SIZE A3 SCALE 1:40,000 PROJECT REF NO. HE551478

DRAWING NUMBER HE551478	ORIGINATOR SKAG	VOLUME ELS	PROJECT REF NO. HE551478
LOCATION CONWI_CONW	TYPE DR	ROLE LS	REVISION C01
	NUMBER 30222		

© Skanska  
 This document is issued for the party which commissioned it and for specific purposes connected with the captioned project only. It should not be relied upon by any other party or used for any other purpose.  
 We accept no responsibility for the consequences of this document being relied upon by any other party, or being used for any other purpose, or containing any error or omission which is due to an error or omission in data supplied to us by other parties.

